



**BURG
WÄCHTER**

ALWAYS THE
SAFE CHOICE

KITCHENS



Commercial Safes



ALWAYS THE SAFE CHOICE

BURG-WÄCHTER is Europe's largest manufacturer of quality safes.

Burg-Wächter offer an extensive range of German engineered safes for the storage of cash and valuables and have over 95 years of lock making expertise to provide a high-quality product.

Burg-Wächter safes are built to strict security requirements and all graded safes are independently certified by ECB.S and tested by VdS to ensure they meet UK insurance requirements.

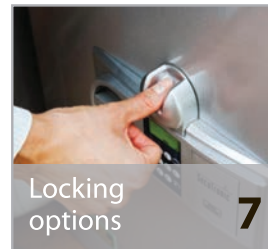
The range includes safes to suit all commercial applications, from offices and retailer premises to jewellers and residential dwellings, Burg-Wächter provide the complete solution for your business.

Require a safe for a specific application? Bespoke safes can be made to user requirements including internal fittings, bolt work and paint finishes at our state of the art facility in Meinerzhagen Germany.



Commercial Safes

Contents





About us





Established for over 95 years, BURG-WÄCHTER have grown from a regional lock manufacturer to a global organisation and respected European brand, offering cutting edge access control and CCTV solutions, alongside German engineered hand built safes and padlocks.

Burg-Wächter are members of the European Security Systems Association (ESSA) and VDMA security systems. Burg-Wächter graded safes are recognised by the Association of Insurance Surveyors (AiS).

Fully compliant to ISO 9001, Burg-Wächter are committed to providing quality products that exceed our customers' expectations. Through a process of continuous improvement, BURG-WÄCHTER UK continually monitor all aspects of the business to ensure we offer the best possible service to our customers and stakeholders.

Burg-Wächter UK Limited is a wholly owned subsidiary of BURG-WÄCHTER KG and is based in West Yorkshire, featuring a state of the art warehouse offering next day delivery, a fully retained sales and aftersales teams with on-site training and testing facilities.



**Association
of Insurance
Surveyors**



ECB.S



**Master
Locksmith
Association**



ESSA



About us



Choosing the right safe

Safes offer protection for cash and valuable assets against burglary and fire. It is important you purchase a safe that is rated to meet or exceeds your business requirements.





BURG-WÄCHTER offer the following graded safes with their associated cash and valuable ratings:

Grade	Cash Rating	Valuable Cover
EN 14450		
S2	£4,000	£40,000
EN 1143-1		
0	£6,000	£60,000
1	£10,000	£100,000
2	£17,500	£175,000
3	£35,000	£350,000
4	£60,000	£600,000
5	£100,000	£1,000,000

Fire Protection

Fire safes offer extra protection to cash and paper based documents in the event of a fire. A "Fire Rating" relates to the amount of time a safe can insulate the contents from heat and damage. The longer this period of time, the greater the fire resistance. Paper will combust at 177°C and therefore safes tested to the strict EN15659 or EN1041-1 standard must be able to keep the internal temperature below this limit for period of time tested. Fire ratings are typically in units of 30 minutes.

Fire Ratings:

Burg-Wächter fire safes are independently tested to the most strict European EN15659, or EN1047-1 standards. These recognised standards ensure safes are correctly tested and meet a strict consistent testing criteria. There are several different fire tests available internationally, many of which are not endorsed by the AiS.

Size and Weight

It is quite easy to forget the simplest consideration when selecting a safe - do I have space for it? Consider the placement of the safe and make sure there is space to accommodate it. Also think about what items will be stored inside the safe and choose one that can accommodate these items. Will your future secure storage need increase?

Finally remember to pay attention to the weight of the safe - safes can weigh well over a tonne. Is the property accessible for installation and will the floor withstand the weight?



Locking Options

All BURG-WÄCHTER safes offer a choice of locking options, including key, combination and fingerscan locks. All Burg-Wächter locks meet the EN1300 standard.

Key operated

Easy and convenient access but requires keys to be stored in a discreet and secure location to prevent unauthorised access. Advanced locks offer the ability to re-programme the lock to a new key.

Electronic keypad

Combination locks with keypad allow access via the entry of a pin code. Some electronic combination locks offer up to 10 programmable codes for multiple users.

Electronic keypad with fingerscan

Biometric finger scan technology reads the unique pattern of a user's fingerprint in order to operate the lock. Burg-Wächter offer the only certified fingerscan safe lock on the market today.

The Royal safe range can be fitted with dual locking options, including double key locks, mechanical tumblers or a choice of key and electronic locks. Burg-Wächter also offer high security fully redundant locks meeting the strict EN1300 Class D security standard.





Version S Key Operated

SecuSafe 9 lever key lock tested by VdS and ECB.S certified to EN 1300 Class 1/A



SecuSafe

10 lever armoured high security key lock tested by VdS and ECB.S certified to EN1300 Class 2/B. Resettable lock can be reprogrammed to a new key.



Version E Electronic Keypad

SecuTronic electronic combination lock tested by VdS and ECB.S certified to EN1300 Class 2/B.



SecuTronic

Intelligent electronic combination lock tested by VdS and ECB.S certified to EN1300 Class 2/B. Menu driven operation with administration of up to 10 users. TSE software compatible for auditing and user administration.



Version E FS Electronic Keypad with Fingerscan

SecuTronic electronic combination lock with integrated fingerscan module with 10 finger print memory. Tested by VdS and ECB.S certified to EN1300 Class 1.



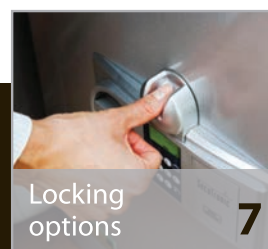
SecuTronic Intelligent electronic keypad with integrated fingerscan module.

Tested by VdS and ECB.S certified to EN1300 Class 2. Menu driven operation with administration of up to 10 users and 20 finger prints. TSE software compatible for auditing and user administration.



Advanced Locking Solutions

Burg-Wächter and sister brand Secu offer locking solutions up to EN1300 Class D. These advanced locks are fully redundant, offer user administration, time delays, audit trails and can be programmed via PC software.





**BURG
WÄCHTER**

Banking





Manufacturing in Germany allows Burg-Wächter to tailor safes to customer requirements. Offering graded safes in a range of sizes and storage capacities, including internal lockable compartments and interior safes, Burg-Wächter are able to protect assets within the financial sector.



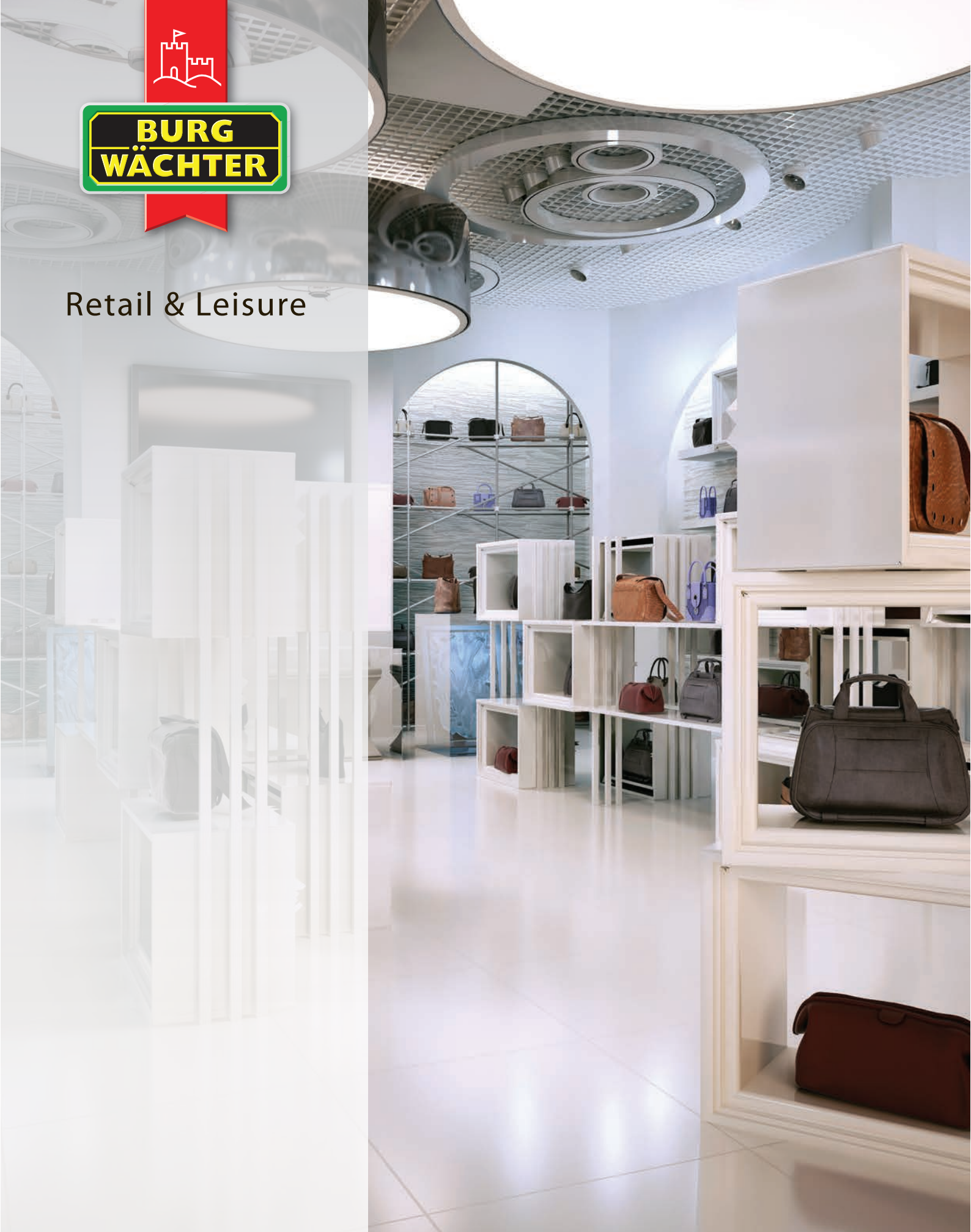
Cash rated safes from: £10,000 to £100,000.
Graded safes from 1 to 5





**BURG
WÄCHTER**

Retail & Leisure





Burg-Wächter's comprehensive safe range caters for both small independent retail through to large supermarket chains. Graded overnight cash protection and a wide range of sizes and locking options offers a solution that caters for your business needs.



Cash rated safes from: £4,000 to £100,000.
Graded safes from 0 to 5



**BURG
WÄCHTER**

Education





Educational institutions from Universities to Primary Schools need a secure location to protect sensitive data documents, exam papers and cash. BURG-WACHTER has a comprehensive range of graded safes with insurance approved cover for £4,000 of cash and upwards. Available in a wide range of sizes to suit application and storage requirements. Fire rated safes offer additional protection to paper documents in the event of fire. Models with shelving and extra depth are also available for secure filing.



Cash rated safes from £4,000 to £100,000

Graded safes from S2 to grade 5

Fire rated safes for up to 60 minutes of fire protection

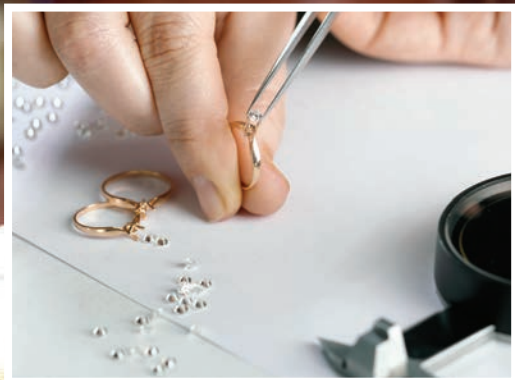




**BURG
WÄCHTER**

Jewellers





BURG-WÄCHTER have safes that offer up to £1,000,000 of AiS insurance approved overnight protection for jewellery and valuables ideal for both independent and chains of high street jewellers. A choice of sizes and models with internal shelving or interior safes offers a solution tailored to your bespoke needs.



Jewellery & valuable rated safes from:
£60,000 to £1,000,000.

Graded safes from 0 to 5





Small Businesses





Owners of small businesses will likely hold cash and important documents that need protection from theft and fire. Burg-Wächter graded safes offer protection recognised by the Association of Insurance Surveyors (AiS approved) for cash and valuables, including models with up to 1 hour of certified fire protection.



Cash rated safes from: £1,000 to £10,000.
Fire rated safes for up to 60 minutes of fire protection





**BURG
WÄCHTER**

Bespoke





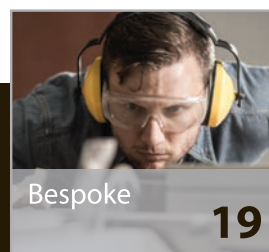
Safes can be used for a multitude of secure storage requirements, and we understand many customers require a tailored solution to meet their requirements.

Burg-Wächter safes manufactured in Germany can be offered with a choice of single or double locks (select models) in either key, electronic, fingerscan or a combination of both.

Interior fittings include lockable compartments, interior safes, pull-out shelving and telescopic filing arms. Safes can be supplied in custom paint finishes to any RAL colour and a choice of bolt work finish. If you have a specific requirement contact Burg-Wächter to discuss the options that are available.



Custom paint finishes to any RAL colour



Bespoke



**BURG
WÄCHTER**

Our Commitment

Purchasing a German engineered BURG-WÄCHTER safe ensures your business assets are safely protected. Not all safes are manufactured equal, and this is why our safes are independently tested in state of the art laboratories of VdS, Germany. Certified by ECB.S, you can be sure our claimed protection for cash and valuables meets internationally recognised standards.

Burg-Wächter are one of only a handful of safe manufacturers that also produce their own locks. Every lock on a Burg-Wächter safe is made in Germany, including high security locks manufactured by SECU, a Burg-Wächter KG company. By manufacturing our safes entirely in-house, we are able to better serve our customers and provide a complete aftersales service.





After Sales

Purchasing a Burg-Wächter safe is just the start of the journey. We are committed to supporting you, our valued customer, with the best of service before and after purchase. We aim to solve any problem in a quick and timely manner, and as an all-round safe and lock manufacturer, we can source parts regardless of the age of your Burg-Wächter safe.



We have a network of nationwide skilled locksmiths and safe engineers that will undertake all service work, from routine maintenance to key cutting and emergency safe opening in the event of lost keys or forgotten codes. A 24 hour help-line provides peace of mind, with a four hour call-out time window to ensure your business keeps functioning with minimal downtime.

UK Nationwide Delivery & Installation

Our qualified installers can deliver and install safes throughout mainland UK. Correct installation and fixing of safes is imperative to meeting insurance requirements, and our team of skilled installers will ensure safes are properly installed in your business. We offer surveys to ensure installers are aware of any unique factors prior to the delivery of the safe, ensuring the process is as smooth and efficient as possible and the correct equipment is used on the day. Alternately we can offer a delivery only service, with many of the safes in-stock



VDMA Security Level B

Insurance rating: £2,000 cash - £20,000 valuables

- Security level B according to VDMA 24992 5/95
- Fire protective material in door and body according to DIN 4102-A1
- Strong round bolts
- Prepared for wall or floor fixing

CityLine



Version S (key operated)

ECB.S certified (EN 1300 class B/2) armoured high security 10 lever key lock with 50,000,000 key differs. Resettable lock can be reprogrammed*.

** Lock can be reprogrammed to a new set of keys*



Version E (electronic keypad)

VdS tested electronic combination lock with ECB.S certification (EN 1300 class B/2). Easily programmable with up to 1,000,000 code combinations possible.

Electronic combination locks are a great alternative to key locks, offering quick access with no key to lose or misplace. Combination code is fully user programmable.



Version E FS (electronic keypad with fingerscan)

VdS tested and ECB.S certified (EN 1300 class A/1) combination lock with biometric fingerscan. 10 fingerprint memory* and 6 digit user pin code.



Fully programmable combination lock with integrated fingerscan module. No key or codes required a simple swipe of 2 programmed fingerprints operates the lock. 2 different fingers must be programmed to open the safe for additional security



C 4 S



C 4 E



C 4 E FS

Art.-No.	Exterior H x W x D	Interior H x W x D	Door H x W	Weight	Volume
	mm	mm	Opening mm	kg	l
C 1	278 x 402 x 376	209 x 336 x 294	209 x 326	30.0	20.6
C 4	528 x 435 x 382	440 x 350 x 292	440 x 345	49.0	45.3

* Add suffix: S (key operated) E (electronic keypad) E FS (electronic keypad with fingerscan)



22

CityLine
Safes

Certification



Grade S2

Insurance rating:
£4,000 cash - £40,000 valuables

- Grade S2 to EN 14450 & VDMA security level B (VDMA 24992)
- AiS approved and ECB.S certified
- Certified 30 minute fire protection to LFS 30 P according to EN 15659
- Independent attack and fire tested by VdS
- Locking bolts on 2 sides of the door
- Prepared for wall or floor fixing



Version S (key operated)

ECB.S certified (EN 1300 class A/1) and VdS tested high security 9 lever lock is ideal for all users with the simplest method of access to the safe.

Ideal for all users, key locks offer the simplest method of safe access.

Supplied with two keys as standard and the lock has over 1,000,000 key differs.



Version E (electronic keypad)

VdS tested electronic combination lock with ECB.S certification (EN 1300 class B/2). Easily programmable with up to 1,000,000 code combinations possible.

Electronic combination locks are a great alternative to key locks, offering quick access with no key to lose or misplace. Combination code is fully user programmable.



Version E FS (electronic keypad with fingerprint)

VdS tested and ECB.S certified (EN 1300 class A/1) combination lock with biometric fingerprint. 10 fingerprint memory* and 6 digit user pin code.



Fully programmable combination lock with integrated fingerprint module. No key or codes required a simple swipe of 2 programmed fingerprints operates the lock. 2 different fingers must be programmed to open the safe for additional security

Art.-No.	Exterior H x W x D	Interior H x W x D	Door H x W	Weight	Volume
*	mm	mm	Opening mm	kg	l
CL 10	320 x 435 x 380	205 x 320 x 232	205 x 265	44	15
CL 20	360 x 495 x 445	245 x 380 x 297	245 x 325	55	27
CL 40	560 x 495 x 445	445 x 380 x 297	445 x 325	77	50

* Add suffix: S (key operated) E (electronic keypad) E FS (electronic keypad with fingerprint)

Combi-Line



CL 40 S



CL 40 E



CL 40 E FS

Certification



Fire certification



Grade 0

Insurance rating:
£6,000 cash - £60,000 valuables

- Resistance grade 0 and independently tested by VdS to EN 1143-1
- AiS approved and ECB.S certified
- Fire resistant materials certified to DIN 4102-A1
- Locking bolts on 3 sides of the door
- Triple walled body
- Enhanced security features
- Prepared for wall and floor fixing
- Adjustable shelf
- Karat electronic models are compatible with TSE door locks and software



Version S (key operated)

ECB.S certified (EN 1300 class B/2) armoured high security 10 lever key lock with 50,000,000 key differs. Resettable lock can be reprogrammed*.

** Lock can be reprogrammed to a new set of keys*



Version E (electronic keypad)

Fully programmable VdS tested and ECB.S certified (EN 1300 class B/2) electronic combination lock with LCD display and menu driven interface. Up to 10 users can be programmed.



Version E FS (electronic keypad with fingerscan)

VdS tested and ECB.S certified (EN 1300 class B/2) electronic combination lock with biometric fingerscan module*.



*LCD display with menu driven interface can administer up to 10 users and 20 finger prints. * 2 different fingers must be programmed to open the safe or combination of fingerprint and 6 digit pin code*

Karat



MT 26 N S



MT 26 N E



MT 26 N E FS

Art.-No.	Exterior H x W x D	Interior H x W x D	Door H x W	Weight	Volume
*	mm	mm	Opening mm	kg	l
MT 24 N	340 x 430 x 390	250 x 348 x 294	250 x 336	43	25.8
MT 26 N	530 x 430 x 390	440 x 348 x 294	440 x 336	60	45.3

* Add suffix: S (key operated) E (electronic keypad) E FS (electronic keypad with fingerscan)



Certification



Grade 1

Insurance rating:
£10,000 cash - £100,000 valuables

- Resistance grade 1 and independently tested by VdS to EN 1143-1
- AiS approved and ECB.S certified
- Emergency non-resettable locking bolts for secondary attack protection
- Superior fire protection certified 60 minutes to LFS 60 P according to EN 15659
- Locking bolts on 4 sides of the door and tripled walled body
- Extensively armoured 4 walled extra slim door for maximum internal space
- Adjustable shelves
- Diplomat electronic models are compatible with TSE door locks and software



Version S (key operated)

ECB.S certified (EN 1300 class B/2) armoured high security 10 lever key lock with 50,000,000 key differs. Resettable lock can be reprogrammed*.

*Ideal for all users, key locks offer the simplest method of safe access. Supplied with two keys as standard. * Lock can be reprogrammed to a new set of keys*



Version E (electronic keypad with fingerscan) *

VdS tested and ECB.S certified (EN 1300 class B/2) electronic combination lock. LCD display with menu driven interface, up to 10 users and 20 finger prints.



Fully programmable combination lock with integrated fingerscan module. No key or codes required – a simple swipe of 2 programmed finger prints operates the lock.

** All Diplomat safes with electronic lock are supplied with fingerscan as standard*

Art.-No.	Exterior H x W x D	Interior H x W x D	Door H x W	Weight	Volume
*	mm	mm	Opening mm	kg	l
MTD 34 F60	380 x 500 x 462	255 x 370 x 300	255 x 337	112	28.3
MTD 35 F60	470 x 500 x 462	345 x 372 x 300	345 x 337	130	38.5
MTD 36 F60	625 x 500 x 462	500 x 372 x 300	500 x 337	161	55.8
MTD 38 F60	985 x 500 x 462	860 x 372 x 300	860 x 337	233	96.0

* Add suffix: S (key operated) E (electronic keypad with fingerscan)

Wall Safes

Art.-No.	Exterior H x W x D	Interior H x W x D	Door H x W	Weight	Volume
	mm	mm	Opening mm	kg	l
WT 10/5 350 E	465 x 500 x 385	345 x 370 x 300	345 x 340	65	37.8
WT 10/6 350 E	620 x 500 x 385	500 x 370 x 300	500 x 340	80	54.8
WT 10/6 580 E	620 x 500 x 580	500 x 370 x 495	500 x 340	90	90.3
WT 10/8 350 E	980 x 500 x 385	860 x 370 x 300	860 x 340	115	94.2
WT 10/8 580 E	980 x 500 x 580	860 x 370 x 495	860 x 340	130	155.4

Diplomat



MTD 36 F60 S



MTD 36 F60 E



WT 10/6 580 E

Certification



Fire certification



Diplomat Safes

25

Royal

The Royal safe models are ideal for those looking for commercial grade security, featuring the very best of BURG-WÄCHTER engineering. With a wealth of customisable options including paint finishes, locking options and internal fittings, each safe can be made bespoke to the user's requirements. Tested by VdS and certified by ECB.S, industry leading security is at the heart of each Royal safe.

- ECB.S grade 1 to 5 resistance to attack from burglary according to EN 1143-1
- AiS approved
- Triple walled body with integrated concealed hinges
- Fire protective material in safe body according to DIN 4102
- Resettable armoured high security lock as standard, ECB.S certified to EN 1300 class 2/B or above
- Grey / white paint finish as standard (bespoke colour & finish special order)
- Adjustable shelf included as standard
- Choice of custom locking options made to order



E 532 E
Shown with special painting
& version E locking option



E 514 ES
Shown with special painting
& version E & S locking options



E 556 ES
Shown with version E and S
locking options

Grade 1

Insurance rating: £10,000 cash - £100,000 valuables



Royal E 512 - 518 ECB.S Grade I certified

Resettable, armoured high security lock included as standard with 10 levers and 50,000,000 key differs. VdS tested and ECB.S certified to EN1300 class B.

Art.-No.	Exterior H x W x D mm	Interior H x W x D mm	Bolts	Weight kg	Volume l
E 512 S	1000 x 695 x 635	745 x 545 x 400	8 ○	220	162
E 514 S	1315 x 695 x 635	1060 x 545 x 400	12 ○	305	231
E 516 S	1755 x 695 x 635	1500 x 545 x 400	14 ○	350	327
E 518 S	1755 x 1130 x 635	1500 x 980 x 400	18 ○	500	588

○ = round bolt

Grade 2

Insurance rating: £17,500 cash - £175,000 valuables



In addition to the Grade 1 Royal safe:

- ECB.S grade 2 resistance to attack from burglary according to EN 1143-1
- Emergency non-resettable locking bolts for secondary attack protection

Art.-No.	Exterior H x W x D mm	Interior H x W x D mm	Bolts	Weight kg	Volume l
E 522 S	1000 x 695 x 635	745 x 545 x 400	8 ○	360	162
E 524 S	1315 x 695 x 635	1060 x 545 x 400	12 ○	480	231
E 526 S	1755 x 695 x 635	1500 x 545 x 400	14 ○	640	327
E 528 S	1755 x 1130 x 635	1500 x 980 x 400	18 ○	910	588

○ = round bolt



26

Royal
Safes

Certification



Grade 3

Insurance rating: £35,000 cash - £350,000 valuables



In addition to the Grade 2 Royal safe:

- ECB.S grade 3 resistance to attack from burglary according to EN 1143-1
- Special fire protective armoured mass in body according to DIN 4102

Art.-No.	Exterior H x W x D mm	Interior H x W x D mm	Bolts	Weight kg	Volume l
E 532 S	1000 x 695 x 635	745 x 545 x 400	8 ○	540	162
E 534 S	1315 x 695 x 635	1060 x 545 x 400	12 ○	690	231
E 536 S	1755 x 695 x 635	1500 x 545 x 400	14 ○	900	327
E 538 S	1755 x 1130 x 635	1500 x 980 x 400	18 ○	1280	588

○ = round bolt

Grade 4

Insurance rating: £60,000 cash - £600,000 valuables



In addition to the Grade 3 Royal safe:

- ECB.S grade 4 resistance to attack from burglary according to EN 1143-1
- Two resettable armoured high security twin tumbler locks as standard, ECB.S certified to EN 1300 class 2/B
- Twin emergency non-resettable locking bolts for secondary attack protection

Art.-No.	Exterior H x W x D mm	Interior H x W x D mm	Bolts	Weight kg	Volume l
E 542 SS	1000 x 695 x 635	745 x 545 x 400	6 ○ + 1 □	560	162
E 544 SS	1315 x 695 x 635	1060 x 545 x 400	10 ○ + 1 □	720	231
E 546 SS	1755 x 695 x 635	1500 x 545 x 400	12 ○ + 1 □	940	327
E 548 SS	1755 x 1130 x 635	1500 x 980 x 400	14 ○ + 2 □	1340	588

○ = round bolt / □ = square bolt

Grade 5

Insurance rating: £100,000 cash - £1,000,000 valuables



In addition to the Grade 4 Royal safe:

- ECB.S grade 5 resistance to attack from burglary according to EN 1143-1
- Additional armouring in front, and behind the locking system
- Double armouring in door and body
- Double basquill lock at the top and bottom of door

Art.-No.	Exterior H x W x D mm	Interior H x W x D mm	Bolts	Weight kg	Volume l
E 552 SS	1040 x 735 x 680	745 x 545 x 400	6 □	980	162
E 554 SS	1355 x 735 x 680	1060 x 545 x 400	8 □	1250	231
E 556 SS	1795 x 735 x 680	1500 x 545 x 400	9 □	1650	327
E 558 SS	1795 x 1170 x 680	1500 x 980 x 400	9 □	2300	588

□ = square bolt

Locking Options

Royal safes can be fitted with multiple locking options to meet customer requirements.



Version S High security resettable key lock



Version CS Resettable key and combination dial lock



Version ES Electronic combination with fingerscan and high-security key lock



Version SS Twin high security key locks



Version CC Two resettable combination dial locks



Version EE Two electronic combination locks with fingerscan



Version C Resettable combination dial lock



Version E Electronic combination lock with fingerscan



Version HSS Two enhanced security twin tumbler key locks with ECB.S class C certification



OfficeLine

OfficeLine safes have extra internal depth making them ideal for filing sensitive data in commercial premises. Available in three models graded up to resistance grade 2, they are also ideal for the storage of cash and valuable assets. There are four sizes offering up to a generous 315 litres of internal volume, and this can be custom fitted with pull out shelving or key racking to order.

- Up to ECB.S grade 2 resistance from burglary according to EN 1143-1
- AiS approved models
- Double walled body and door
- Solid 28mm locking bolts on three sides of the door and additional dog bolts on hinge side
- Emergency non-resettable re-locking mechanism on graded 1 & 2 models
- Adjustable shelving included as standard
- Choice of locking options



Office 102 S



Office 112 S



Office 114 E



Version S (key operated)

ECB.S certified (EN 1300 class B/2) armoured high security 10 lever key lock with 50,000,000 key differs. Resettable lock can be reprogrammed*.

*Ideal for all users, key locks offer the simplest method of safe access. Supplied with two keys as standard. * Lock can be reprogrammed to a new set of keys*



Version E (electronic keypad) 101 to 106 models only

VdS tested electronic combination lock with ECB.S certification (EN 1300 class B/2). Easily programmable with up to 1,000,000 code combinations possible.

Electronic combination locks are a great alternative to key locks, offering quick access with no key to lose or misplace. Combination code is fully user programmable.



Version E (electronic keypad with fingerprint) 111 to 116 and 121 to 126 models only

VdS tested and ECB.S certified (EN 1300 class B/2) electronic combination lock. LCD display with menu driven interface, up to 10 users and 20 finger prints.



Fully programmable combination lock with integrated fingerprint module. No key or codes required – a simple swipe of 2 programmed finger prints operates the lock.



Certification



VDMA Security Level B

Insurance rating: £2,000 cash - £20,000 valuables



- Security level B according to VDMA 24992 5/95
- Double walled body & door with strong round bolts

Art.-No.	Exterior H x W x D mm	Interior H x W x D mm	Door H x W Opening mm	Weight kg	Volume l
Office 101	626 x 641 x 554	476 x 498 x 370	476 x 498	110	87
Office 102	816 x 641 x 554	666 x 498 x 370	666 x 498	126	122
Office 102 300	816 x 641 x 554	666 x 498 x 370	666 x 498	300	122
Office 104	1096 x 641 x 554	946 x 498 x 370	964 x 498	163	174
Office 104 30	1096 x 641 x 554	946 x 498 x 370	964 x 498	300	174
Office 106	1486 x 780 x 554	1336 x 638 x 370	1336 x 638	300	315

* Add suffix: S (key operated) E (electronic keypad with fingerscan)

Grade 1

Insurance rating: £10,000 cash - £100,000 valuables



- ECB.S grade 1 resistance from attack from burglary according to EN 1143-1
- Fire protective material in body and door

Art.-No.	Exterior H x W x D mm	Interior H x W x D mm	Door H x W Opening mm	Weight kg	Volume l
Office 111	626 x 641 x 554	476 x 498 x 370	476 x 498	121	87
Office 112	816 x 641 x 554	666 x 498 x 370	666 x 498	205	122
Office 114	1096 x 641 x 554	946 x 498 x 370	964 x 498	213	174
Office 114 300	1096 x 641 x 554	946 x 498 x 370	964 x 498	305	174
Office 116	1486 x 780 x 554	1336 x 638 x 370	1336 x 638	310	315

* Add suffix: S (key operated) E (electronic keypad with fingerscan)

Grade 2

Insurance rating: £17,500 cash - £175,000 valuables



- ECB.S grade 2 resistance from attack from burglary according to EN 1143-1
- Fire protective material in body and door
- Double non-resettable emergency lock re-locking mechanism in door mechanics

Art.-No.	Exterior H x W x D mm	Interior H x W x D mm	Door H x W Opening mm	Weight kg	Volume l
Office 121	626 x 641 x 554	476 x 498 x 370	476 x 498	205	87
Office 122	816 x 641 x 554	666 x 498 x 370	666 x 498	205	122
Office 124	1096 x 641 x 554	946 x 498 x 370	964 x 498	239	174
Office 126	1486 x 780 x 554	1336 x 638 x 370	1336 x 638	336	315

* Add suffix: S (key operated) E (electronic keypad with fingerscan)



OfficeLine
Safes

29

Grade 2

Insurance rating:
£17,500 cash - £175,000 valuables

OfficeDoku safes feature a high level of certified fire resistance making them perfect for the storage of important and irreplaceable documents and cash.

All the benefits of the OfficeLine, plus...

- Certified 60 minute fire protection (S 60P to EN 1047-1)
- Available in two sizes
- Two locking options including key and electronic keypad with fingerscan



Version S (key operated)

Resettable, armoured high-security safe lock, 'SecuSafe', ECB.S certified according to EN 1300 class B, with 2 keys, 10 levers, key retaining, 50.000.000 key differs. The locking armature protrudes 25 mm. More security in case of losing the key – immediately resettable to a new key.

Art.-No.	Exterior H x W x D	Interior H x W x D	Door H x W	Weight	Volume
	mm	mm	Opening mm	kg	l
OfficeDoku 121 S	626 x 641 x 555	476 x 498 x 336	476 x 498	300	79.6
OfficeDoku 124 S	1096 x 641 x 555	946 x 498 x 336	946 x 498	450	158.3



Version E (electronic keypad with fingerscan)

Electronic combination lock 'SecuTronic', with integrated fingerscan module, VdS approved class 2. With intelligent menu-driven operation, administration of up to 10 user codes, up to 20 fingerscans and up to 300 optional TSE E-KEY. User names, access times and -rights, calendar functions, etc. programmed via optional TSE software packages. Incl. 2 batteries Mignon LR 6 AA. The locking armature protrudes 50 mm.

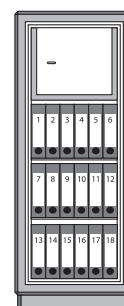
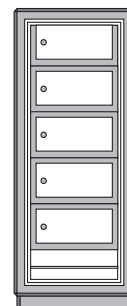
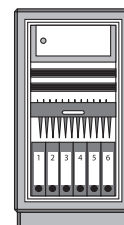
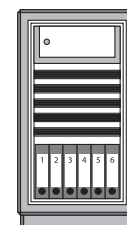
Art.-No.	Exterior H x W x D	Interior H x W x D	Door H x W	Weight	Volume
	mm	mm	Opening mm	kg	l
OfficeDoku 121 E	626 x 641 x 555	476 x 498 x 336	476 x 498	300	79,6
OfficeDoku 124 E	1096 x 641 x 555	946 x 498 x 336	946 x 498	450	158,3

OfficeDoku



OfficeDoku 124 S

Examples of
internal space
utilisation



30

OfficeDoku
Safes

Certification



Fire Protection



Notes

[illegible]

Notes

[illegible]

Notes

[illegible]



ALWAYS THE SAFE CHOICE

BURG-WÄCHTER UK Ltd.

Eurocam Technology Park
Chase Way, Bradford
BD5 8HW

T: 01274 395333

E: UKsales@burg.biz

BURG-WÄCHTER KG

Altenhofer Weg 15, 58300 Wetter, Germany